



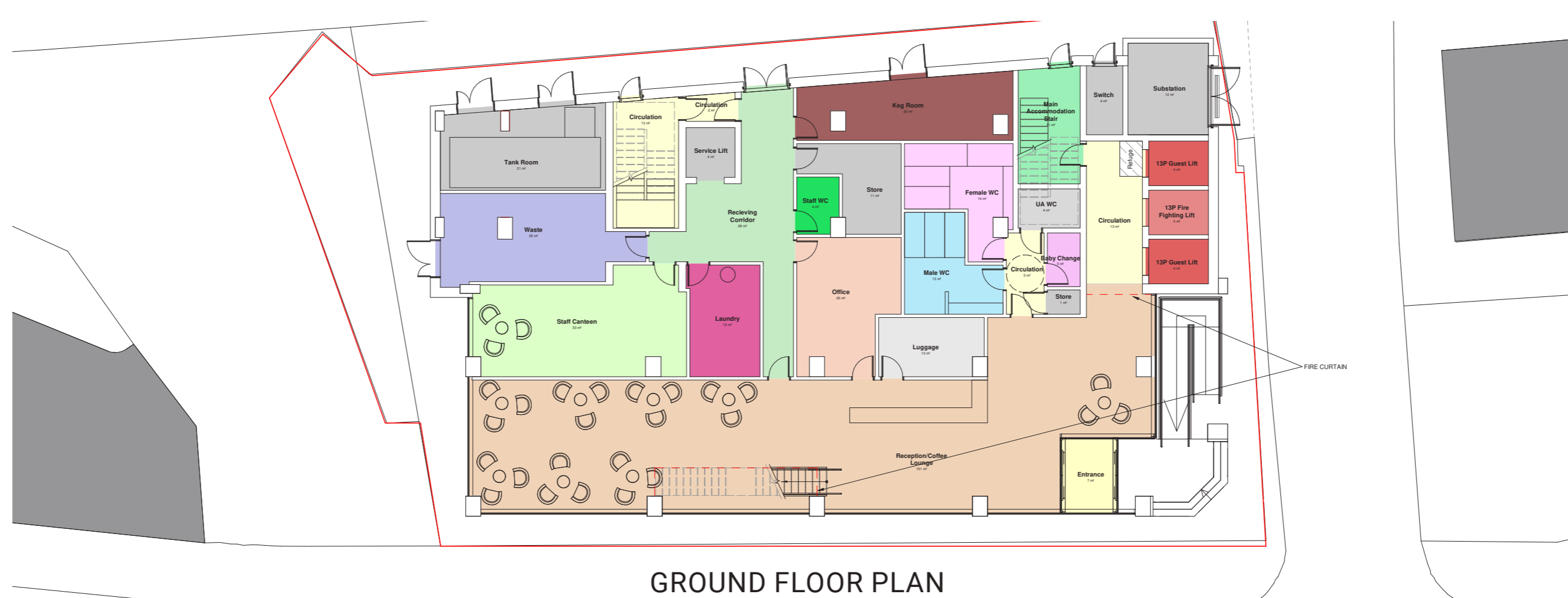
The hotel layout is designed to create lively public spaces to the front elevation along Chapel Street

PROPOSED PLANS

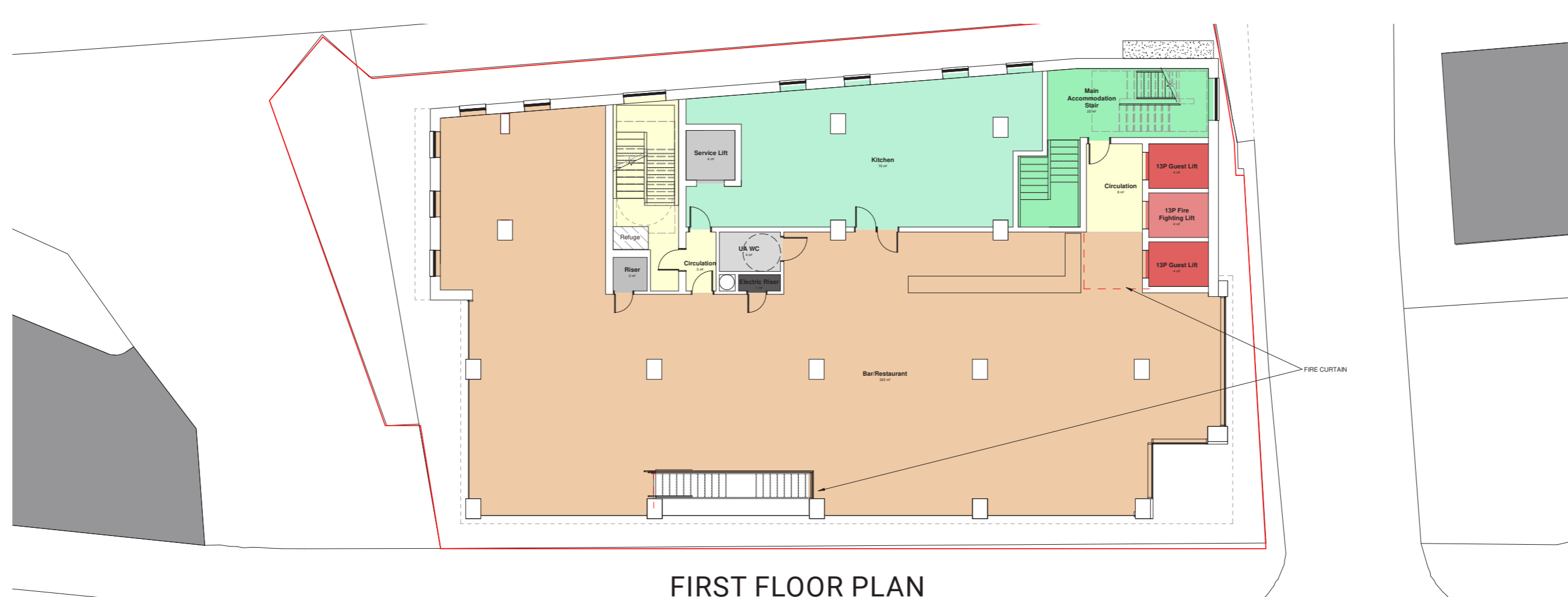
The layout of the hotel has been carefully developed during the design process to ensure lively, active public spaces will be located along the entire length of the front elevation across the lower two floors.

The ground floor includes the reception area and a publicly accessible coffee lounge, with all back of house facilities located to the rear at this level. Any operational requirements such as waste and servicing are dealt with sensitively, located away from the main entrance and Chapel Street frontage, accessed via a discreet service route to the rear of the building.

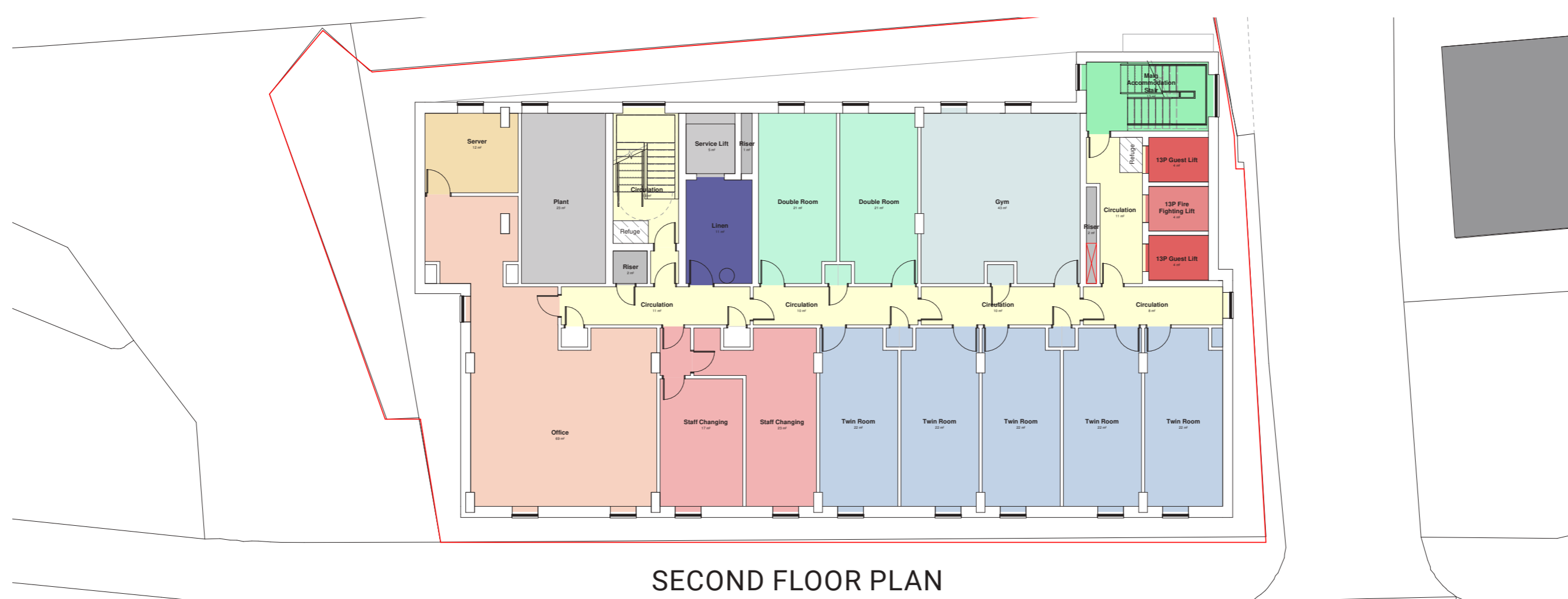
The first floor includes a publicly accessible bar and restaurant continuing activity at the first floor level, with associated kitchen facilities. The second floor includes staff facilities, a residents gym and hotel rooms. The upper floors accommodates a range of hotel rooms including a mix of double, twin and universal access rooms.



GROUND FLOOR PLAN



FIRST FLOOR PLAN



SECOND FLOOR PLAN