



External materials will be high-quality and in-keeping with the local colour palette

PROPOSED EXTERIOR

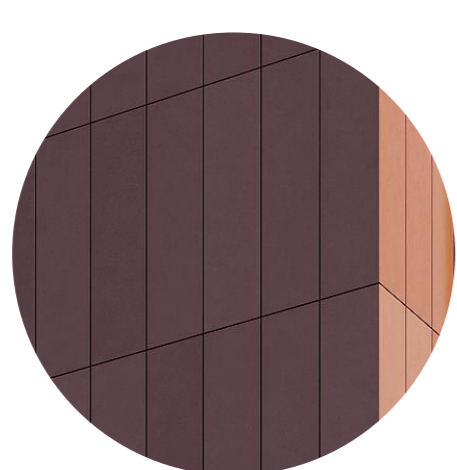
The façade approach is being developed in consultation with officers. The CGIs presented in the public exhibition reflect the current design intent, which will be a distinctive, high quality building that ties into the family of buildings emerging at Embankment West

Materials have been chosen to be in keeping with the quality Maldron offer and to complement the existing and emerging built context.”

ELEVATIONS - CURRENT DESIGN INTENT



MATERIALS - CURRENT DESIGN INTENT



1. Cladding - Bronze

Bronze toned aluminium rainscreen cladding to the front elevation and front sections of the east and west stepped elevations, installed from Level 02-15



2. Cladding - Grey

Dark Grey toned aluminium rainscreen cladding to the rear elevation and rear sections of the east and west stepped elevations, installed from Level 02-15



3. Brickwork

Dark grey buff brick to the rear elevation and rear sections of the east and west stepped elevations, installed to ground and first floor.



4. Windows

Aluminium double glazed windows with protruding frame detail in colour to match bronze cladding



5. Fascia & Columns

Columns and fascia detail framing curtain walling at ground and first floor



6. Curtain Walling

Dark Grey framed two storey curtain walling installed to live street frontage at ground and first floor

